



Globe Road, London, E2

BUTLER  STAG



Guide Price - £400,000 to £425,000

A spacious top-floor ex-local authority two-bedroom flat set within Staffords Cripps House on Globe Road, featuring a private balcony with impressive south-west facing city views.



Leasehold

- Two Double Bedrooms
- South West Facing City Views
- Top Floor
- Natural Light Throughout
- Private Balcony
- Chain Free
- Lift Access
- EWS1 Compliant

The flat is well proportioned throughout and has been very well maintained, offering a solid, comfortable home with plenty of natural light. While the property would benefit from a little cosmetic updating, it presents an excellent opportunity to add value and personalize to taste.

One of the standout features is the private balcony, enjoying far-reaching south-west views across the city, ideal for afternoon sun and evening sunsets. Positioned on the top floor, the flat also benefits from a peaceful setting and an elevated outlook.

An ideal purchase for first-time buyers or investors seeking a spacious home with outdoor space and fantastic views in a well-located block.





Globe Road

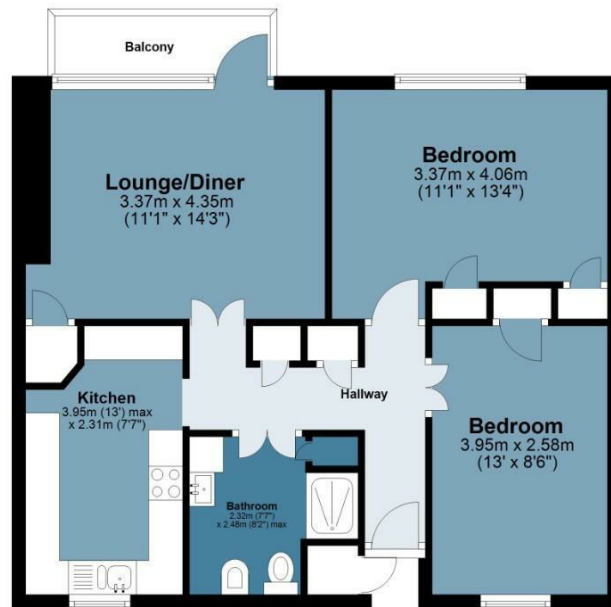
Approx. Gross Internal Area 62.4 Sq M (672.2 Sq Ft)

BUTLER & STAG



Fourth Floor

Approx. 62.4 sq. metres (672.2 sq. feet)



Measurements are approximate and for illustration purposes only. While we do not doubt the accuracy and completeness, we advise you conduct a careful independent assessment of the property to determine monetary value.
© @modephoto.uk www.modephoto.co.uk

IMPORTANT NOTICE - These particulars have been prepared in good faith and they are not intended to constitute part of an offer or contract. We have not performed a structural survey on this property and the services, appliances and specific fittings have not been tested. All photographs, measurements, floor plans and distances referred to are given as a guide and should not be relied upon.

BUTLER & STAG

☎ 020 8102 1236

🏠 508 Roman Road, Bow, London, E3 5LU

✉ bow@butlerandstag.com

www.butlerandstag.uk